

Introduction to Hedgehog Care & Requirements

- Our baby mix includes Fussie Cat Chicken & Turkey, Purina One Kitten, and Pure Balance Chicken & Brown Rice. (may also include Redford Chicken & Hedgehog Precision)
 - The average hedgehog eats 1 TBSP - 1/4 cup per day. By 4-6 months of age, you should switch to an adult mix of approximately three different quality cat foods of above 30% protein, under 15% fat, 2-3% fiber, real poultry should be the main ingredient.
 - *Our adult mix includes Fussie Cat Chicken & Turkey Meal, Purina One Tenders Selects Chicken, Pure Balance Chicken & Brown Rice. (may also include Redford Adult Chicken & Hedgehog Precision.)
 - If you are looking for a one bag option, we highly recommend Hedgehog Precision. Sold via <https://shop.hedgehogprecision.com>. Use coupon code "welcometohp" for 15% off your first order. This is the only recommended commercial hedgehog food.
 - live or canned mealworms (no freeze dried). Offer a few as treats on a regular basis.
 - 12" solid exercise wheel (Kaytee Giant Comfort Wheel & Carolina Storm Bucket Wheel)
 - Enclosure size must be a minimum of 4 sq.ft. with solid bottom (most popular choices are 105Qt. Sterilite plastic tub, C & C Cage, Guinea Pig Habitat with plastic bottom, or home-made from repurposed furniture)
 - Must stay 72 degrees to 80 degrees. Our cages are maintained at 75F.
 - 100-150 watt ceramic heat emitter bulb on a temperature controller/thermostat
(DO NOT USE HEAT LIGHTS OR HEAT ROCKS)
 - Aveeno baby wash for bathing once a month. Check to see if toe nails need trimming.
 - Vitamin E oil can help dry skin
 - No Cedar shavings. Use kiln dried pine, aspen, Carefresh, or fleece liners. Tip: Freezing shavings for 24 hours then allowing to come to room temperature before use, can help prevent mites.
 - No chocolate, nuts, grapes, or raisins (see safe treats lists online). Be aware of choking hazards.
 - Handle daily! We cannot stress enough how important spending time with your hedgehog is.
- Have questions? Email us at hedgehog@carolinaquillery.com or call us at 757-639-1134



8.5" Lamp



100-150 watt Ceramic Heat Emitter Bulb



Thermostat



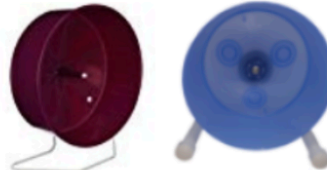
Thermometer



Large Hide



12" Kaytee Comfort Wheel or Carolina Storm Wheel



Bedding



Cage Shopping List

All the items listed below are necessary to provide an appropriate home for a hedgehog.

- Cage must be a minimum of 4 square feet. Kaytee 30" x 18" cages with a plastic bottom or a 105 quart or larger Sterilite Container is acceptable. **NO WIRE BOTTOMS, NO GLASS AQUARIUMS & NO HIGH LEVELED CAGES.**
- 12" wheel with a solid running surface. Carolina Storm wheel or Kaytee Comfort Wheel are recommended. **NO WIRE. NO KAYTEE SILENT SPINNER.**
- A Hide. This can be a large tree trunk or igloo. Large enough for the hedgehog to comfortably move around in.
- 2 shallow bowls 4" diameter x 2" high - 1.5" depth. Living World Ergonomic Small Pet Dishes are recommended.
- 8 oz. water bottle or larger
- Bedding. Can be Aspen, Kiln-Dried Pine, pine pellets, paper pellets, fleece, Care Fresh, Uber, or Kaytee Clean & Cozy. **(NO CEDAR!)**

Heat Source Shopping List

Heating Element consists of 4 components. You must have all 4 items to ensure a safe temperature is maintained for your hedgehog.

- 8.5" Clamp Lamp with Switch 150 Watt
- Ceramic Heat EMITTER BULB 100-150 Watt
(These bulb only produce heat. They do not produce light, therefore will not bother the hedgehog's sleep schedule. **DO NOT USE HEAT LAMPS OR REPTILE PADS!** It is also recommended to keep a back up bulb on hand.)
- Digital Thermostat / Temperature Controller (This is not a timer. Please read the labels carefully. These controllers are designed to maintain a set temperature.)
- Digital Thermometer with wire lead to monitor cage temperature